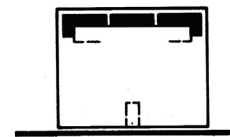
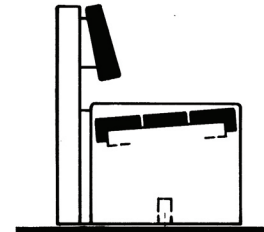


Star

The Swiss wood and concrete classic for a multitude of uses



A combination of wood, concrete and its timeless shape make the Star bench collection suitable for many settings.

The special concrete corner cubes allow for numerous placing combinations in 90° increments. The system is especially suited to parks, picnic areas and scenic points.

Construction

- Exposed concrete base
- Seat timbers either pine painted dark-green (RAL 6005) or untreated larch

Various bench combinations with concrete corner cubes 54/54/45 cm on finished surface. See examples 1 + 2 overleaf.

Other lengths, types of wood or colours available on request.

Installation

- On finished surfaces, can be secured in place with mortar or adhesive
- In-ground with side bases

Models

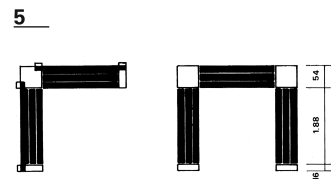
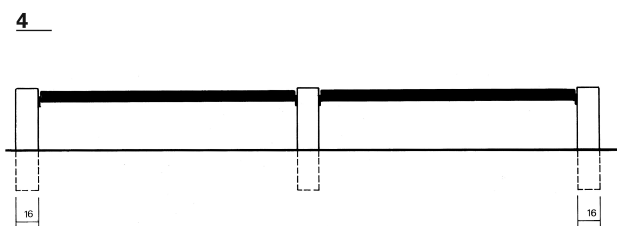
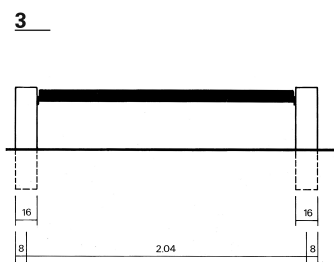
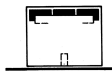
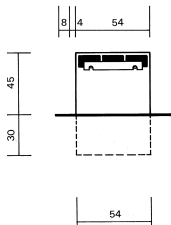
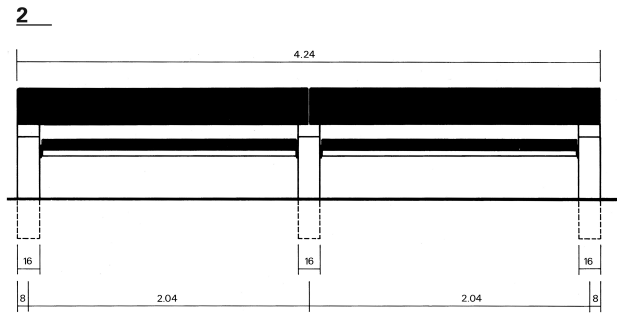
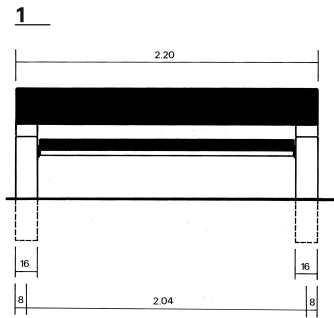
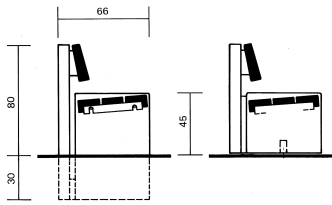
- Star with backrest
- In-ground
- On a finished surface

- Star without backrest
- In-ground
- On a finished surface

- Star double bench with backrest
- In-ground
- On a finished surface

- Star double bench without backrest
- In-ground
- On a finished surface

Technical data overleaf.
Prices according to price list.



1 Star with backrest, in-ground

- Length: 2.20 m
- Weight: 365 kg

Star with backrest, on finished surface

- Length: 2.20 m
- Weight: 305 kg

2 Star double bench with backrest, in-ground

- Length: 4.24 m
- Weight: 580 kg

Star double bench with backrest, on finished surface

- Length: 4.24 m
- Weight: 490 kg

3 Star without backrest, in-ground

- Length: 2.20 m
- Weight: 265 kg

Star without backrest, on finished surface

- Length: 2.20 m
- Weight: 220 kg

4 Star double bench without backrest, in-ground

- Length: 4.24 m
- Weight: 415 kg

Star double bench without backrest, on finished surface

- Length: 4.24 m
- Weight: 345 kg

5 Sample Star combinations

- Corner bench with backrest
- U-shaped bench without backrest

Choice of seat timbers:

- Dark-green pine (painted)
- Untreated larch

Installation

- On finished surfaces, can be secured in place with mortar, anchor or adhesive
- In-ground with side bases
- With corner cube for bench combination