

## City Bench Type A

Bench system for the urban space: self-cleaning, impact-resistant, durable



The ergonomic design of seating areas and backrests offer high seating comfort, even at low temperatures, without pressure marks. The object-compatible design and the special material selection of the seat slats, aluminium profiles with hard rubber coating (polyvinyl chloride, free of DEHP/Cd/Pb), result in weatherproof city furniture: lightfast and maintenance-free thanks to high degree of self-cleaning.

For long structures, benches with only one foot each can simply be added and mounted. Additions with backrest in both directions with dimensions between axes of 2m, or additions of benches with backrest and without backrest are easily possible. Thus fascinating seating configurations are created.

### Design:

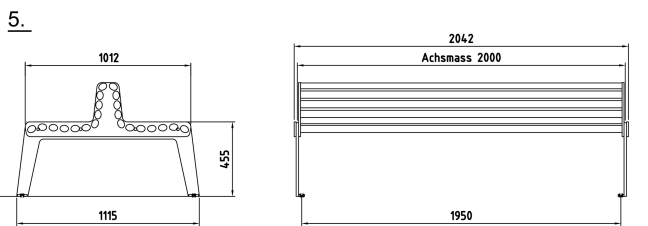
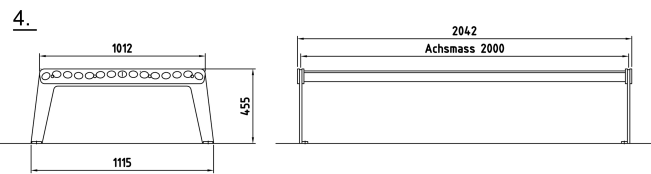
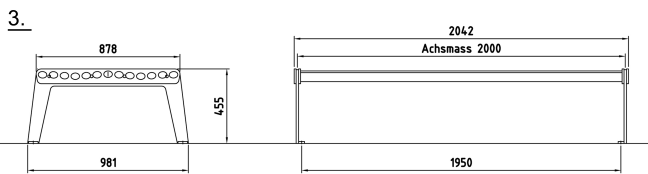
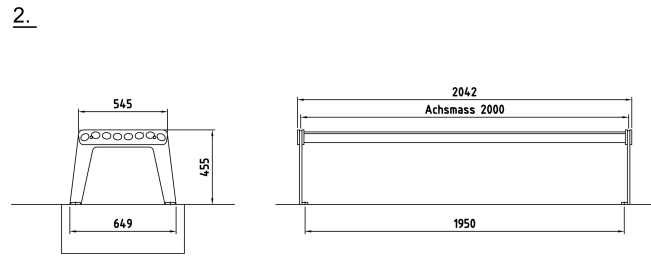
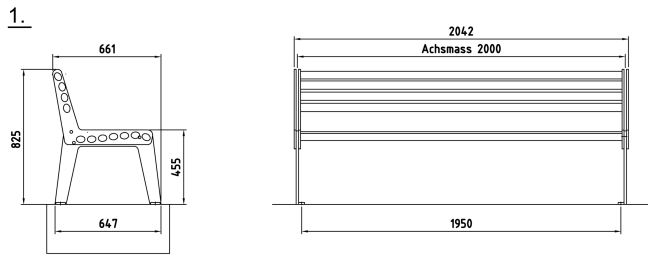
- laser-contoured steel side panels, hot-dip galvanised, anthracite powder-coated
- seat slats special aluminium profile with oval hard rubber profile (polyvinyl chloride, free of DEHP/Cd/Pb), replaceable/recyclable
- safety screws, stainless steel
- armrest optional
- bench types for any length can be added to optionally, dimensions between axes 2m

### Models

- City bench type A
- with backrest and armrest
  - with backrest
  - without backrest standard
  - without backrest, B = 981mm
  - without backrest, B = 1115mm

Special additions and other shapes on request.

For technical specifications see reverse. Prices according to price list.



City bench type A without backrest extra wide

**1**  
City bench type A with backrest and armrest

- weight 100 kg
- length 2.042 m

**2**  
City bench type A with backrest

- length 2.042 m
- weight 92 kg

**3**  
City bench type A without backrest

- length 2.042 m
- weight 70 kg

**4**  
City bench type A oRL, B = 981mm

- length 2.042 m
- weight 108 kg

**5**  
City bench type A oRL, B = 1115mm

- length 2.042 m
- weight 124 kg

**Seat slats**

- aluminium with hard rubber coating (polyvinyl chloride, free of DEHP/Cd/Pb)
- colour black
- rubber profile recyclable

**Mounting**

- all types dimensions between axes 2 m
- bolting directly into solid floor covering, or cobblestones
- for positioning freely on solid underground
- on 2 concrete foundations to be embedded

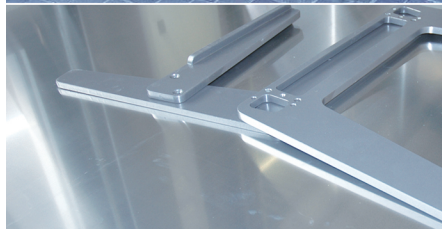
**Foundations**

- concrete 75/30/15 cm
- weight 66 kg

## Bench System for the Public Space

Simple design, comfortable, self-cleaning, impact-resistant, durable

### Flexible bench system City Bench Type A and Type V



A simple design, suited for versatile urban contexts and for parks. Thanks to the special surface of the seat and back slats any maintenance usually required for wood or plastic materials is made redundant.

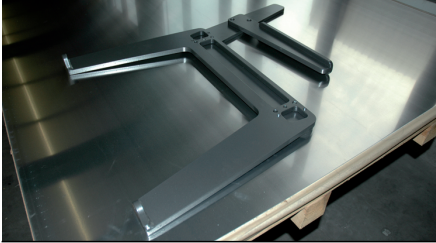
The seat slats can easily be replaced in case of bad damage caused by vandalism.

The hard rubber coating (polyvinyl chloride, free of DEHP/Cd/Pb) remains lightfast and weatherproof for a long time. Scratches, cuts and blows hardly leave any traces. Thanks to the high vandalism protection under normal exposure any upkeep is practically eliminated; the durability of the bench system is - the same as with other BURRI products - to be measured in decades.



## technical innovation

---



### **Industrial manufacture and optimum maintenance**

*New materials and technology create added value*

Compared with wood this innovative hard rubber surface is significantly more resistant to external influences such as cuts, scratches, blows, solar radiation and weather. The seating comfort is ideal and the degree of self-cleaning of the slats is very high.

Specially designed aluminium profiles with hardening core assume the support function. The oval hard rubber profiles (polyvinyl chloride, free of DEHP/Cd/Pb) are slid onto the profiles. The rubber is fully recyclable and the aluminium profiles can be fitted with new rubber in case of severe vandalism.

---

## implementation process



### **High demands and time pressure**

*Planning reliability and process optimisation through prototype construction*

The market square in Oerlikon and the Limmatquai in Zurich were to be fitted with new benches. The high requirements made and the short implementation time demanded optimum processes. Therefore, numerous prototypes were built directly on a scale of 1:1. Thus design, ergonomics, engineering, optimum maintenance, statics, materials and finally the readiness for series production under actual conditions of practice were tested and implemented.

---

## economic efficiency



### **Keeping urban complexes beautiful in a maintenance-free manner**

*Intelligent design and new materials make it possible*

In the urban space the running costs often exceed the cost price already after 5 years.

Due to the resistant material and the high degree of self-cleaning of the seat and back slats, any maintenance usually required for wood or plastic materials is made redundant. The hard rubber coating (polyvinyl chloride, free of DEHP/Cd/Pb) offers optimum seating comfort and is lightfast and weatherproof over decades. Scratches, cuts and blows hardly leave any traces. The service life of the seating system is - as with other BURRI products - to be measured in decades. However, due to the minimal running costs this city bench is already fully financed after five years.