

Landi Loungers

Relaxed hours in the public space



The Landi Lounger offers people of all ages a comfortable opportunity to relax and unwind. The used materials correspond to those of the classic bench, which was designed in 1939 by Alfred Altherr and Charles Hoch for the Swiss National Exhibition.

The complementary product variant, Landi Ergo Lounger, takes special account of the ergonomic needs of the user. The Landi Inclusion lounger helps to ensure that the public space can also be experienced without restriction by people with disabilities.

Durability and ageless design make the Landi a popular lounger for numerous types of applications in the public space.

For the different variants of the Landi product family, there are tables, loungers and other furniture in the same design.

Version:

- Galvanized tubular steel frame
- Stainless steel bolts
- Solid wood seat slats
 - Natural larch
 - ARBODUR® (Thermo Ash finish)
 - NATWOOD® (Thermo Ash finish)
 - Natural Robinia
 - Fir green-grey or painted red

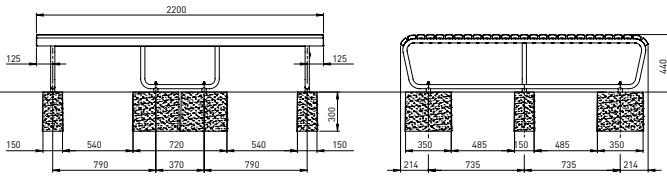
Other colours on request

Installation

- freestanding
- dowelled onto solid flooring
- concrete foundations for ground installation
- with adapters for discrete installation

See overleaf for technical specifications

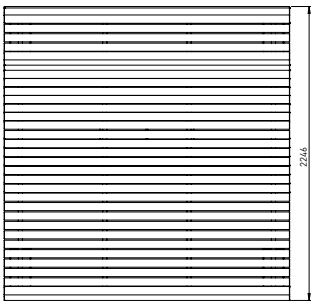
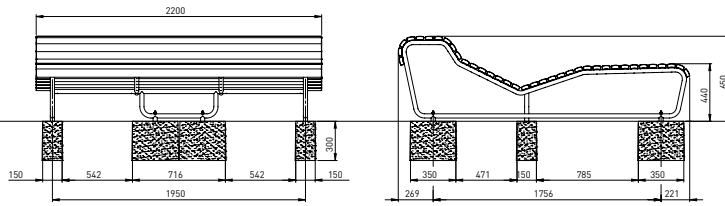
1 Landi Lounger



Weight: 60 kg

Item number	Seating surface material
AMBAN1000.2633	Natural larch
AMBAN1000.2639	NATWOOD®
AMBAN1000.2631	Natural Robinia
AMBAN1000.2608	Fir painted (RAL/NCS)
AMBAN1000.2637	Fir green-grey painted
AMBAN1000.2635	Fir red painted
AMBAN1000.2605	ARBODUR®

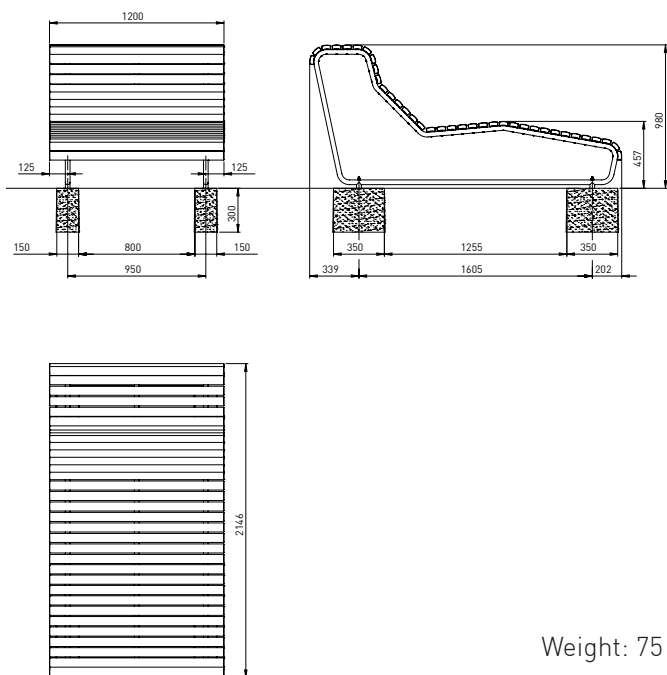
2 Landi Ergo Lounger



Weight: 70 kg

Item number	Seating surface material
AMBAN1000.2643	Natural larch
AMBAN1000.2649	NATWOOD®
AMBAN1000.2641	Natural Robinia
AMBAN1000.2607	Fir painted (RAL/NCS)
AMBAN1000.2647	Fir green-grey painted
AMBAN1000.2645	Fir red painted
AMBAN1000.2604	ARBODUR®

3_Landi Inclusion Lounger

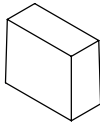
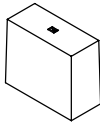
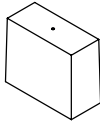
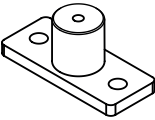


Weight: 75 kg

Item number	Seating surface material
-------------	--------------------------

- | | |
|----------------|-----------------------|
| AMBAN1000.2600 | Natural larch |
| AMBAN1000.2601 | NATWOOD® |
| AMBAN1000.2602 | Fir painted (RAL/NCS) |
| AMBAN1000.2603 | ARBODUR® |

Landi Lounger = 1
 Landi Ergo Lounger = 2
 Landi Inclusion Lounger = 3

Concrete foundations				
Graphic	Item number	Description	Number	Bench seat
	AMBAN91003500	for ground installation Dimensions: 350 x 300 x 150 mm Weight: 42 kg	6 pieces 4 pieces	1, 2 3
	AMBAN91003501	for ground installation with anchor rail Dimensions: 350 x 300 x 150 mm Weight: 42 kg	6 pieces 4 pieces	1, 2 3
	AMBAN91003510	for ground installation with CNS threaded sleeve M10 Dimensions: 350 x 300 x 150 mm Weight: 42 kg	6 pieces 4 pieces	1, 2 3
Adapters				
Graphic	Item number	Description	Number	Bench seat
	AMBAN10001007	for dowelling onto foundations	6 pieces 4 pieces	1, 2 3