

HPM ZERO BIKE

Modular parking system for bicycles



The covered bike racks were developed in connection with the Glattalbahn tram stop infrastructure. The racks can be extended in modules and offer space for 10 bikes in the Model 2 or 20 bikes in the Model 3. Hidden water channels and drainage are integrated into the supports. The robust structures manufactured from high-quality materials with special anti-graffiti coating are perfect for applications in public spaces.

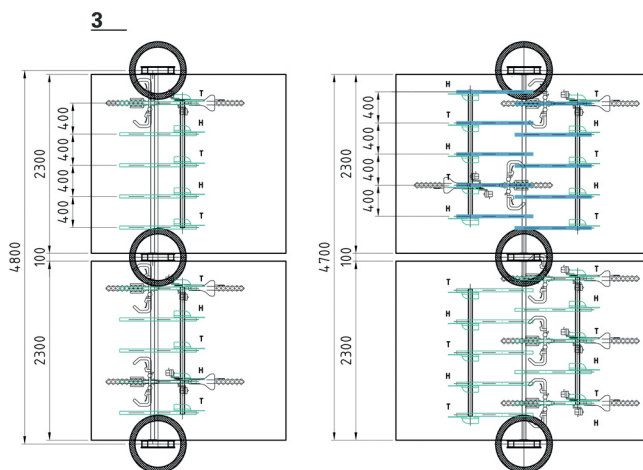
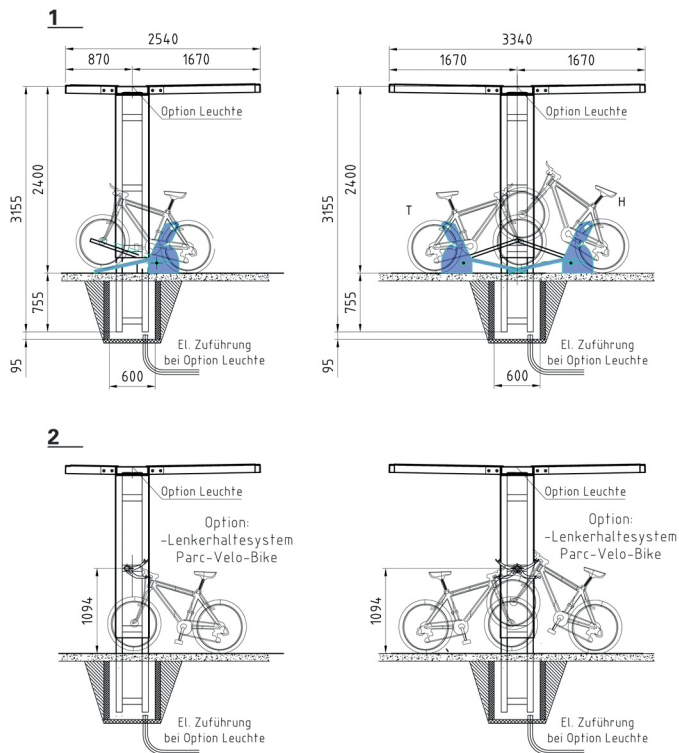
Design

The covered racks can be supplied with crossbars with "horns" for fastening the handlebars or with floor blades for positioning the bikes. All steel parts, apart from the roofing plates, are hot dip galvanized and stove-enamelled in RAL 9011+GTB. All connection parts are made from A2 stainless steel. For raw assembly, the rack supports are set in prepared concrete tubes, anchored and set in place with more concrete. The base connection is then formed and the final installation of the roofs and panels etc. is performed.

Models

Model 2 for one-sided parking of bikes provides spaces for 10 bikes with 2 frames each 2.4m wide and 2.4m tall and a total depth of 2.54m. The modular design enables the system to be extended by additional frames of 2.4m, each providing 5 additional parking spaces. Any number of additional frames can be added; the only limitation is the available space.

Model 3 for double-sided parking of bikes provides spaces for 20 bikes with 2 frames each 2.4m wide and 2.4m tall and a total depth of 3.34m. The modular design enables the system to be extended by additional frames of 2.4m, each providing 10 additional parking spaces. Any number of additional frames can be added; the only limitation is the available space.



1
Side view HPM Models 2 and 3 with floor blades

2
Side view HPM Models 2 and 3 with crossbars and "horns"

3
Plan view HPM Models 2 and 3, both with basic design with 2 frames

HSI ZERO

Modular solution for complex requirements

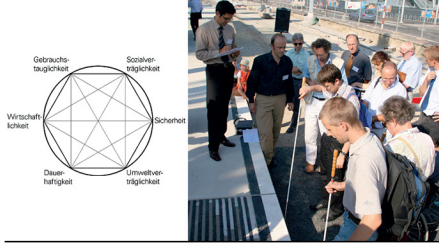
Traffic infrastructure for all age groups



The two-lane tram network covers a total of 12.7km, joining the city of Zurich and the international Zurich airport and servicing the municipalities of central Glattal. The track and the 21 tram stops form a symbolic bridge connecting the agglomeration of Zurich that has to date remained somewhat isolated. The design and engineering need to combine the wide range of interests and requirements of all age groups. The GlattalBahn tram system is more than just a transport system: it is, in the words of the building contractor, the central element of "a town landscape of high urban quality". The physical structures - the tram stops, overhead line supports and railing systems with their modular components - give the system a uniform appearance.



standards and specifications



Planning, implementing and using value retention *A joint planning framework provides clarity*

As the sole contractor for the tram stop infrastructure, BURRI public elements has significantly contributed to the implementation of Glattal transport services' quality system: usability in all urban situations, social responsibility with regard to the various requirements of users and the requirements of age-appropriate mobility, safety in all components and interfaces, environmental compatibility from production to recycling, sustainability as a public investment and ultimately profitability throughout the entire life cycle. Increasing requirements for system safety are taken into account, as is the full implementation of the disabled people's equality act.

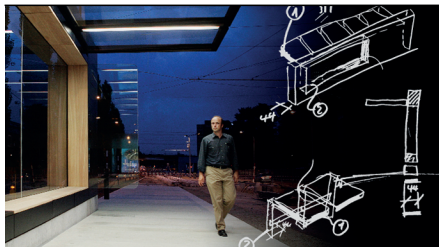
project partner(s)



Cooperation as the basis for sustainable solutions *A uniform process chain, from design to installation*

If complex infrastructure projects are to work successfully, they must be based on close cooperation and a balance of interests between the individual partners. This principle defines BURRI public elements work as a sole contractor cooperating with planners, architects, authorities and partners structural and civil engineering, who work on the various design, planning, business, housing and traffic objectives. A dialogue-orientated work culture enables us to find rapid solutions to unexpected difficulties in all cases.

technical innovation



Modularity as a consequence *Solutions with space for future requirements and developments*

While conventional shelters can only be upgraded through complex and intrusive work, the modular design of the Glattalbahn tram stop infrastructure provides maximum flexibility at any time. The technical highlights include special mounts for the 750kg steel plates with no visible screws, special anti-graffiti powder coating, rectangular roof and railing tube lights that function with any lengths, transparent bird-protection glass, roofing glass with screen print for transparency and sun screening and a wide variety of multifunctional tram-stop and bridge railings. All CCM modules such as ticket machines, loud-speakers, LED poster light boxes, ventilation and drainage are integrated flush with the panel and are easily accessible for maintenance work.